

| REV | DESCRIPTION | DATE | REV | DESCRIPTION | DATE |
|-----|---|----------|-----|-------------|------|
| C | Renovated RM 145 & Changed Entry Door Swing - MDS | 11/30/18 | | | |
| B | RESTROOM RENOVATIONS - MDS | 3/2013 | | | |
| A | REVISED RM 128-138-138 - MDS | 8/2009 | | | |



100 FACILITIES BUILDING
 NOTRE DAME, IN 46556

(574) 631-6594
 FAX: (574) 631-8468

BASE FLOOR PLAN
 LEWIS HALL

FIRST FLOOR

PRINT DATE: ----

DWG. NAME 107801

| | | |
|-----------|---------|----------------|
| DRAWN BY: | DATE: | SCALE: |
| JRB | 12/6/95 | 1/8" = 1' 0" |
| APPROVED: | DATE: | PROJECT PHASE: |
| | | |
| REV. | | |



| REV | DESCRIPTION | DATE | REV | DESCRIPTION | DATE |
|-----|--|---------|-----|-------------|------|
| C | Revised Room 217 & added doorway into hall - MDS | 2/28/17 | | | |
| B | RESTROOM RENOVATIONS - MDS | 10/2012 | | | |
| A1 | REVISED RM 201-205-208-223 - MDS | 8/2009 | | | |
| A2 | REVISED RM 226-227-238-239 - MDS | 8/2009 | | | |

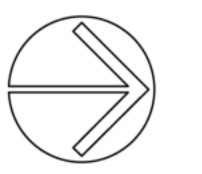


**UNIVERSITY OF
NOTRE DAME**
Facilities Design & Operations

100 FACILITIES BUILDING
NOTRE DAME, IN 46556

(574) 631-6594
FAX: (574) 631-8468

| | | | |
|-------------------------------|------------------|------------------|------------------------|
| BASE FLOOR PLAN LEWIS HALL | DRAWN BY: JRB | DATE: 12/6/95 | SCALE: 1/8" = 1' 0" |
| SECOND FLOOR | APPROVED: | DATE: | PROJECT PHASE: |
| | PRINT DATE: | ---- | |
| DWG. NAME 107802 | REV. | | |



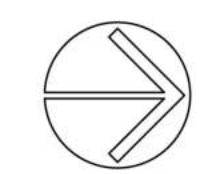
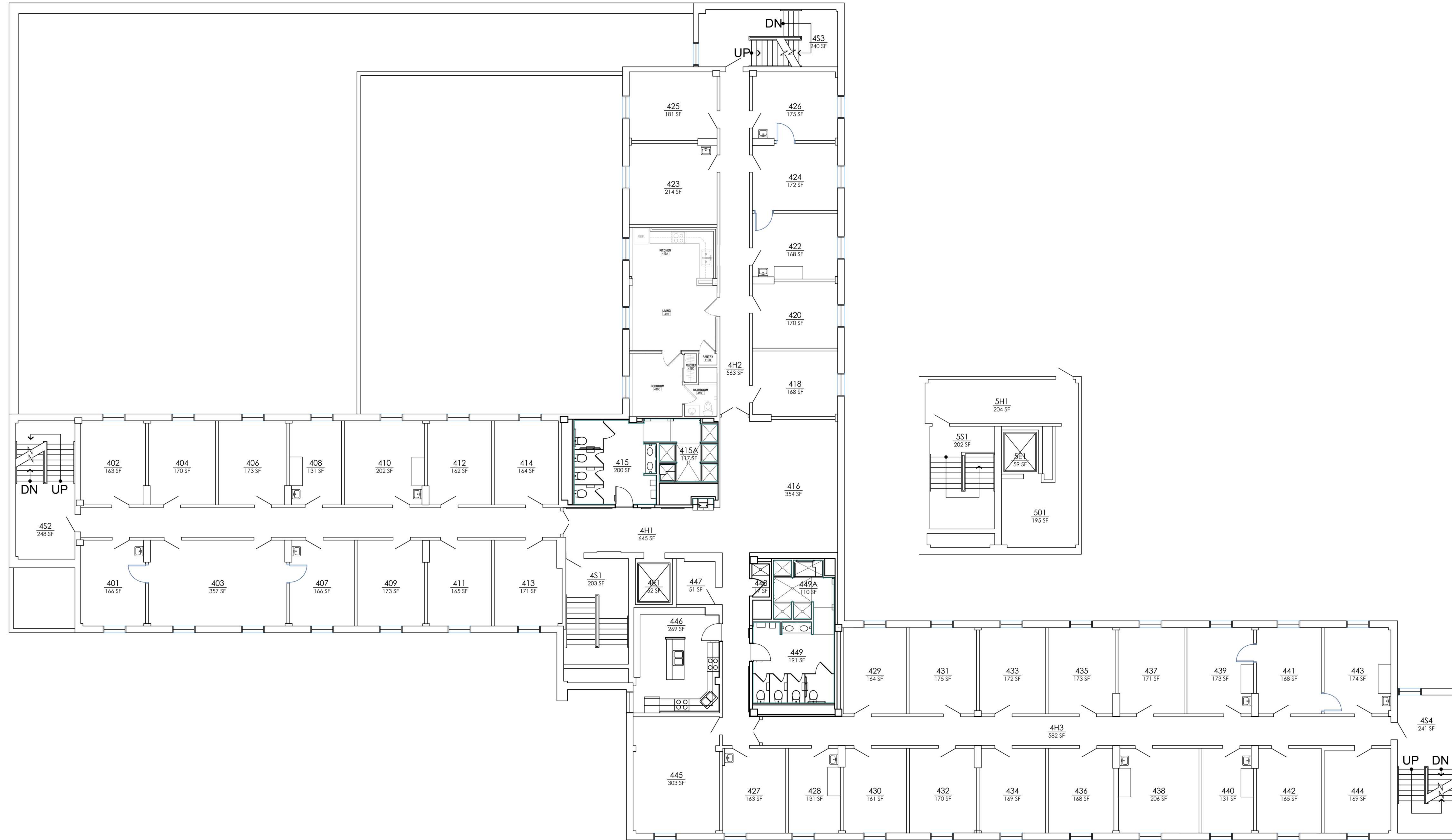
| REV | DESCRIPTION | DATE | REV | DESCRIPTION | DATE |
|-----|--------------------------------------|---------|-----|-------------|------|
| B | RESTROOM RENOVATIONS - MDS | 10/2012 | | | |
| A1 | REVISED RM 303-310-317-323 - MDS | 8/2009 | | | |
| A2 | REVISED RM 316-324-327-338-341 - MDS | 8/2009 | | | |



100 FACILITIES BUILDING
 NOTRE DAME, IN 46556
 (574) 631-6594
 FAX: (574) 631-8468

BASE FLOOR PLAN
 LEWIS HALL
 THIRD FLOOR

| | | |
|---------------------|------------------|------------------------|
| DRAWN BY: JRB | DATE: 12/6/95 | SCALE: 1/8" = 1' 0" |
| APPROVED: | DATE: | PROJECT PHASE: |
| PRINT DATE: ---- | | |
| DWG. NAME 107803 | REV. | |



| REV | DESCRIPTION | DATE | REV | DESCRIPTION | DATE |
|-----|------------------------------|---------|-----|-------------|------|
| B | RESTROOM RENOVATIONS - MDS | 10/2012 | | | |
| A1 | REVISED RM 403-410-424 - MDS | 8/2009 | | | |
| A2 | REVISED RM 428-438-441 - MDS | 8/2009 | | | |

UNIVERSITY OF NOTRE DAME
Facilities Design & Operations

100 FACILITIES BUILDING
NOTRE DAME, IN 46556

(574) 631-6594
FAX: (574) 631-8468

BASE FLOOR PLAN
LEWIS HALL
FOURTH FLOOR

PRINT DATE: ----
DWG. NAME 107804

| | | |
|------------------|------------------|------------------------|
| DRAWN BY: RAS | DATE: 9/17/92 | SCALE: 1/8" = 1' 0" |
| APPROVED: | DATE: | PROJECT PHASE: |
| DWG. NAME 107804 | | REV. |